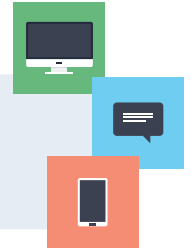


Electronic Giving Guide



With this new giving option, we are now capable of receiving tithes and offerings in several electronic forms:

- On our website (saalemfirstfriends.org)
- Through the mobile app: **EasyTithe Giving** (available free through the Apple and Android app stores)
- Or even with a quick text message (330-303-1413)



Website Giving Guide

Getting Started:

Once you've clicked the "Online Giving" button on our website (www.salemfirstfriends.org), you will be taken to a page where you can learn more about giving. If you choose to give in this way, click on the "Give Online Now" button and you will be taken to our interface on EasyTithe. Once there, follow these guidelines to begin giving online.

- Would you like to give without setting up a donor account? Click "Quick Give"
- First Time Donor? Click "First Time" and setup your Donor Profile
- Already a registered donor? Simply enter your Email and Password
- Forget your password? Click "Forgot Password"

Setting Up Your Donor Profile:

- Enter your email address and password
- Password must be at least 8 characters and must contain a combination of letters and numbers
- Remember these login credentials! You will need them to access your Donor Profile

Automatic Recurring Donations – Online Check/Bank Transfer (ACH):

- Select "Scheduled Giving" on the left hand navigation
- Click the "Use Check" icon at the top
- Within the check graphic, enter an amount, select which fund you would like to donate to, and enter your bank information.
- Select the frequency of your donation and start date
- Specify your bank name, state and account type
- Click "authorize" to start your recurring donation schedule

Automatic Recurring Donations – Cards:

- Login by entering your email address and password
- Select "Scheduled Giving" on the left hand navigation
- Select which fund you would like to donate to from the drop down list
- Enter your donation amount
- Select the frequency, number of installment and start date
- Add your card information and billing details
- Click "Activate Schedule" to start your recurring donation schedule

One Time Gift – Online Check/Bank Transfer (ACH):

- Login by entering your email address and password
- Select to "Use Check" located at the top right of your screen or select ACH/eCheck from the drop down menu
- Select which fund you would like to donate to from the drop down list
- Enter your donation amount
- Add your bank account information
- Click "Authorize" to submit donation

One Time Gift – Cards:

- Login by entering your email address and password
- Select which fund you would like to donate to from the drop down list
- Enter your donation amount
- Add your card information and billing details
- Click "Submit" to process your donation

Mobile App Giving Guide

Getting Started:

- Launch the app store from your device and search for our app
- Make sure your location services are turned ON. When you launch the app, you can search for your organization by typing the organization name and/or zip code, or choose to search for organizations near you
- Login or create a donor profile to give to your organization
- Once logged in, make a donation by tapping the “+” icon

Giving a Donation:

- Enter your donation amount.
- Select which fund you would like to donate to from the drop down list
- Select Payment Method
- Tap “Add new payment method” and add your card and billing details, bank information (for ACH giving), or use the “Quick Scan” feature to scan your card information
- Choose your recurrence. You can give a one-time donation or setup a recurring donation from this menu.
- Tap “Give” to process your donation

Other Features:

- You can view your contribution history by tapping the History tab
- Donor profile settings can be adjusted by tapping the Settings tab
- Payment methods can be updated here
- Personal information (name, address) and Account details (email, password, and security pin) can be updated in this tab as well

Mobile Giving Tips:

You can also use your mobile browser to give. You can visit your organization’s giving portal using your mobile browser on your smartphone or tablet to give via the mobile friendly giving website

Text Giving Guide

Donor Guide:

- Text the amount you would like to give to 330-303-1413
- If you are a first time text-giving donor, you will be prompted to visit a secure URL
- Once you click the registration link, you will be prompted to enter your credit or debit card information
- At this point your donation will process
- You will see a confirmation text showing your donation and registration were successful

Tips for Future Text-Giving Donations:

- If you only text a monetary value, the funds are attributed to your church’s default fund. (Ex: \$50 = will go to default fund)
- If you text “Funds” you will receive a reply text including a list of the fund names they can choose to donate to
- If you text the amount + fund name – the funds will be attributed to that fund name. (Ex: \$10 Building)
- If the fund name you texted does not match – you will receive a message with a list of fund names for you to choose from. Respond with the number of the correlating fund
- If you text “Help” you will receive a reply text that states: “To give enter the amount you want to give, such as 100. You can also give to a specific fund by typing it after your amount, such as 100 building fund”
- If you text “Reset” you will receive a reply text that states: “Saved card information successfully removed. Please register your card information again when making your next gift by texting an amount to this number